

# CHELTENHAM ART GALLERY & MUSEUM

## PLANNING FOR MULTICULTURALISM, FESTIVALS, FAITHS, CITIZENSHIP AND DIVERSITY

Check out what's on offer from the Education & Outreach Team for our teaching colleagues and KS1, KS2 and KS3 co-ordinators.



Our **Celebrating Festivals** programme offers an interesting and enjoyable way in to different times, cultures and faiths. These lively workshops last just under two hours, covering a cross-curricular mix, investigating the colourful traditions and stories behind the festivals, and inspiring creativity through a range of excitingly different art activities. A workshop can be booked for either a morning or afternoon slot and costs £60 plus vat for a class of up to 30 children.

### **CHINESE NEW YEAR**

Discover why the Chinese New Years are named after an animal, try on costume, find out about dragons, and have a go at traditional paper cuts and calligraphy. The New Year takes place in January or February, and we usually work in partnership with the Everyman Theatre to offer schools a week of whole day activities to make the sessions even more exciting!

### **CELEBRATING WESAK AND BUDDHISM**

Unpicking a thrilling story, finding out about the meaning of gestures, simple life style, chanting, mandalas, prayer wheels and prayer flags sending positive thoughts through time and place. From prince's clothing to a simple saffron robe, Buddhism shows the way to enlightenment.

### **CELEBRATING HARVEST**

Celebrating the hay harvest in the Cotswolds in 18th-century style. Using original rural objects from the museum's collections, together with the huge and detailed Dixton paintings, students can reflect on how the harvest safely gathered in was as critical to the villagers' survival 250 years ago as it still is in many parts of the world today. The workshop will inspire a creative response through words, art and dance.

## **EXPLORING EID AND ISLAMIC ART**

The workshop uses geometric, non-figurative art and design to experiment with both as a group and individually. We explore magic squares, calligraphy and religious practices, as well as understanding more about the shared stories that link us all together. An opportunity to look at Islam in a positive and sensitive way.

## **CELEBRATING DIVALI AND HINDUISM**

Fantastic stories of Vishnu, Ganesh, Rama and Sita, with colourful costume and objects make this a very popular workshop. Investigate the traditions of the festival and have a go at working in small groups to design a brilliant rangoli.

## **CHRISTMAS IN VICTORIAN STYLE**

Discover how so many of our favourite traditions began in Victorian times. Find out about all the household preparations, including stirring the pudding (and making a wish!), as well as re-creating a traditional tree decoration to take back to school.

We also offer a workshop on a **1940s CHRISTMAS**, when rationing and shortages meant you needed some imagination (and advice about how to recycle and 'make do and mend') to come up with ideas for special presents and decorations during wartime.

## **ARE YOU PLANNING A ONE-WORLD MULTICULTURAL WEEK FOR YOUR SCHOOL?**

Please contact us to help! We have rich collections of stories, objects, costume and ideas for art activities that can support studies of Africa, China or India in colourful and imaginative ways. Choose an appropriate activity for the children to try out from a range including rangoli making, calligraphy, paper cuts, designing a toy, making a banner and lots more!

Workshops can be tailor made to focus on one or more cultures or integrate traditional stories, myths and legends with rhythm, counting and repetition as a starting point for creative storytelling.

Other ideas are to concentrate on cultural patterns and decoration ...

Or investigate the use of materials to tie in with current issues of sustainability and recycling.

**For further details** about workshops and bookings please contact the Education & Outreach Officers, Virginia Adsett, Faye Little or Sandra Ashenford, by e-mailing [educationoutreach@cheltenham.gov.uk](mailto:educationoutreach@cheltenham.gov.uk) or phoning 01242 775702.

Don't forget the Museum Take-Away service also has a wealth of boxes of material to borrow through Claire Chambers. Contact her by e-mailing

[Claire.chambers@cheltenham.gov.uk](mailto:Claire.chambers@cheltenham.gov.uk) or phoning 01242 775701.

# CHELTENHAM ART GALLERY & MUSEUM

## PLANNING FOR HISTORICAL STUDIES

Would you like to include some cross-curricular links? Are you new to the area or would like a reminder about the range of historical workshops that are currently available through Cheltenham Art Gallery & Museum? Check out what's on offer from the Education & Outreach Team for our teaching colleagues and KS1, KS2 and KS3 co-ordinators.



Workshops support the national curriculum in lively and imaginative ways, engaging the children's interest through a variety of activities and learning styles. They last just under two hours with time for discussion, investigating original artefacts, and trying on costume. They also inspire creativity, are a valuable tool to raise awareness of the nature of museums and developing skills in historical inquiry ... and they are fun! A workshop can be booked for a morning or afternoon slot and costs £60 plus vat for a class of up to 30 children.

### OFF THE PEG WORKSHOPS TO CHOOSE FROM AT ANY TIME OF THE YEAR

**THE TUDORS** - Bring this period of exploration and discovery to life through original paintings and objects, and with specially-made costume to try.

**THE STUARTS AND THE GREAT FIRE OF LONDON** - a story of rats, plague and a raging fire that resulted in a new look to London, using contemporary accounts to inspire creative writing, and examining properties of materials.

**GEORGIAN LIFE AND THE RISE OF CHELTENHAM SPA** - what the Royal family and other grand visitors wore and used when the discovery of the spa waters transformed an insignificant street into a fashionable town.

**FLORENCE NIGHTINGALE** - Discover the life and times of a remarkable Victorian lady whose views on hygiene and cleanliness had far-reaching influence on nursing.

**VICTORIAN LIFE** - Investigating life in town and country, servants and the running of a home, children, toys and entertainment, education and work. Combine this workshop with an investigation of Homes in the Past (KS1) in the period room settings Holst Birthplace Museum.

**EDWARD WILSON** - The unforgettable and thrilling story of a local hero, famous Antarctic explorer and talented artist. Expand the historical study across the curriculum to consider geography, healthy eating, diary writing and an opportunity for some detailed natural history sketching.

**BESIDE THE SEA** - Looking back at seaside holidays in the past, through objects, paintings, photographs, an original Mr Punch puppet and costume. Consider ways that children enjoy the seaside in very similar ways to the past, but with very different fashions!

**LIFE ON THE HOMEFRONT** – Explore the experience of those at home coping daily with blackout, rationing, bombs and uncertainty.

**POST WAR - TEDDY BOYS AND MINI SKIRTS** - the end of the war, and a period of optimism celebrating the coronation of a beautiful young Queen, the invention of teenagers with their own fashion and music, television ... and sliced bread!

Most workshops can be requested any time during the school year to fit in with your studies, but the popular **CELEBRATING A VICTORIAN CHRISTMAS** is usually programmed in for two weeks at the end of November. Re-create the traditions of a Victorian Christmas with the Housemaid and Governess, and make a typical tree decoration and a pomander to take back to school. An ideal opportunity to come in costume to make the experience even more memorable!

### **FIRST NEWS OF AN EXCITING INNOVATIVE PARTNERSHIP BETWEEN CHELTENHAM ART GALLERY & MUSEUM AND GLOUCESTERSHIRE WARWICKSHIRE RAILWAY**

Plans to develop a fantastic multi-sensory Evacuation Experience for KS2 children are currently under discussion. Engaging sound, smell, touch, sight (and taste if you bring your own spam sandwiches wrapped in greaseproof paper!) children will enjoy a steam train ride in a carriage reserved solely for school groups and a led session by Museum Education staff using original material from the museum collections. The learning potential is enormous – encouraging a sense of time and opportunity for role play, understanding the power of steam and the chance to talk to the engineers who drive and maintain the engines, handling key WW2 objects, thinking about evacuees and the impact and disruption of war on family life.

**For further details** about workshops and bookings please contact the Education & Outreach Officers, Virginia Adsett, Faye Little or Sandra Ashenford, by e-mailing [educationoutreach@cheltenham.gov.uk](mailto:educationoutreach@cheltenham.gov.uk) or phoning 01242 775702.

Don't forget the Museum Take-Away service also has a wealth of boxes of material to borrow through Claire Chambers. Contact her by e-mailing [Claire.chambers@cheltenham.gov.uk](mailto:Claire.chambers@cheltenham.gov.uk) or phoning 01242 775701.

# CHELTENHAM ART GALLERY & MUSEUM

## PLANNING A STUDY AROUND TOYS

Would you like to include some cross-curricular links? Are you new to the area or would like a reminder about the range of workshops that are currently available through Cheltenham Art Gallery & Museum? Check out what's on offer from the Education & Outreach Team for our teaching colleagues and KS1, KS2 and KS3 co-ordinators.



Toys and children are a winning combination and you can access the rich resources we have in the collections to support a study that is immediately engaging, and has great potential for successful cross curricular development.

**INVESTIGATING TOYS AT THE MUSEUM** – our popular off the peg workshop is available at any time of the school year and allows children try out a range of historical, traditional and multicultural toys, investigate energy and movement, and light and sound. They will discover how different materials are used, think about design and issues of health and safety, and what makes the toys work. The workshop lasts for just under two hours at the museum and costs £60 plus vat for a class of up to 30 children.

We can adapt the workshop to fit the age of the children and the particular learning outcomes you want to achieve. We can adapt the format to maximise the time and number of children involved, by for example, on occasions coming out to the school, setting up displays in the hall, talking to the classes together and allowing investigation time afterwards. Recently we worked in partnership with staff at Gloucester High School to develop a Design day for all Y7 students. We were involved in setting up the rolling programme of workshops, able to offer sessions looking at **Toys through History** and **Investigating Materials** used to make toys. These tailor-made sessions worked really well, tying in with issues of ethics in factory toy production and inspiring the students with ideas for their practical design tasks. Please ask about costs for this service.

## OTHER IDEAS ...

### MATERIAL WORLD

Focusing on the historical and traditional toys, looking at how wood, china, lead, wax, straw, fur, boot buttons and beads are used. This could link to modern toys from Africa and India to include re-cycling, sustainability, and the class experimenting with design directed by restricted availability of material.

### BEAR ESSENTIALS

Focusing on examples of Teddy Bear design, seeing how positioning and spacing the minimalist features of eyes, nose and mouth produces very different effect.

### BEHIND THE SCENES AT THE MUSEUM

A practical workshop learning about the role of a museum curator and what is involved in looking after a museum collection, issues of conservation, preservation, environment, storage, and handling delicate materials. Children are invited to bring a toy of their own and go through all the different processes including using white cotton gloves, accessioning, writing suitable labels, and setting up a mini-museum display.

### THAT'S THE WAY TO DO IT!

With this opportunity to investigate and enjoy discovering the world-wide tradition of puppets, children can try out marionettes, shadow, rod, and glove puppets, and look at the crude and vivid Punch and Judy set given to the museum by Professor Boffey, a wartime Mickey Mouse using blackout material as well as examples of the Arts & Crafts tradition with William Symonds beautifully carved animals. The children then design and experiment with light and shade to produce their own shadow puppet performance of their own or a traditional story.



For further details about workshops and bookings please contact the Education & Outreach Officers, Virginia Adsett, Faye Little or Sandra Ashenford, by e-mailing [educationoutreach@cheltenham.gov.uk](mailto:educationoutreach@cheltenham.gov.uk) or phoning 01242 775702.

Don't forget the Museum Take-Away service also has a wealth of boxes to borrow through Claire Chambers. Contact her by e-mailing [Claire.chambers@cheltenham.gov.uk](mailto:Claire.chambers@cheltenham.gov.uk) or phoning 01242 775701.

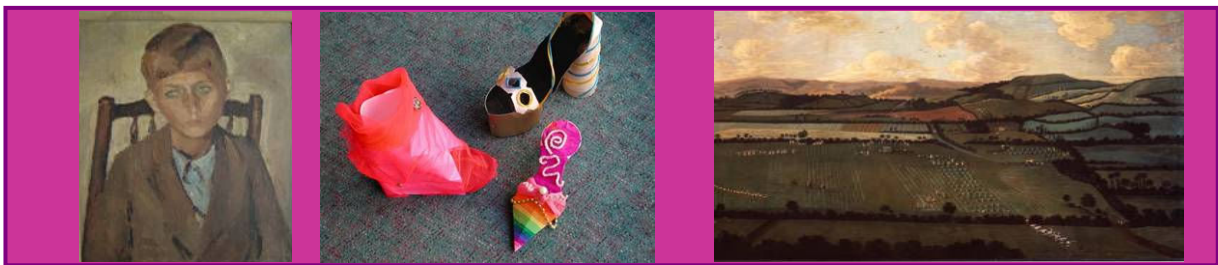
# CHELTENHAM ART GALLERY & MUSEUM

## ART, DESIGN AND TECHNOLOGY

We offer a range of exciting Art and Design/Technology workshops which aim to extend children's knowledge, understanding and appreciation of art in an enjoyable way. Our permanent galleries and exhibitions offer great opportunities for workshops to enrich and enliven art and design in the curriculum.

Workshops involve investigation and discussion of museum objects, paintings or displays together with practical art work. We also develop specific workshops to support our programme of temporary exhibitions.

Sessions are designed to support QCA schemes of work at all Key Stages and can also be incorporated into cross curricular study. We aim to be flexible and can adapt workshops to suit your particular needs or areas of learning.



### FACE TO FACE

How do artists communicate ideas about themselves and others? What can we tell about the person in a portrait? Using our wonderful collection of paintings, this session discusses how portraits can convey messages about the sitter through pose, composition, background and objects placed in the picture.

The workshop involves some simple drama exercises as well as practical art work. Children will take it in turns to be the sitter or the artist to develop their own portraiture. Hats and simple dressing up clothes will help children get into character to make posing fun.

### TAKE A SEAT

From a sedan chair to a weighing chair to beautiful Arts & Crafts designs, the museum boasts an impressive range of chairs, from the 17<sup>th</sup> to 20<sup>th</sup> century, displayed around the galleries. Through investigation and discussion about function and design children will have the opportunity to develop their own ideas for some fun practical work.

## **LOOKING AT LANDSCAPES**

Explore the countryside in all weathers in the comfort of the museum. Children can discover our fine collection of landscape paintings in the galleries and through mark making exercises and drawing go on to create a group landscape.

## **CURIOUS CREATURES**

Children will hunt for all sorts of creatures around the galleries and look at some natural history specimens. A story time will be included with discussion about children's book illustrations. The children will go on to design their own mythical creatures with the result culminating in a class picture book. An ideal start for some creative writing back at school.

## **ALL SHAPES AND SIZES – CONTAINERS, BAGS OR SHOES**

Discover an exciting collection of containers, bags or shoes in all shapes and sizes. Through handling and discovery the children will investigate function, materials and design to inspire them to produce their own creations from scrap materials.

## **PERFECT PATTERNS**

Discover a wide range of beautifully decorated items in the museum's displays and handling material. Choose to explore and record traditional Indian or Chinese patterns or the designs of William Morris and his followers in our nationally acclaimed Arts & Crafts collection. With a practical art activity to complete the session.

## **LOOKING AT SCULPTURE**

The museum has a small but varied collection of sculpture on display, ideal for comparing and learning about the different styles, methods and materials used. The children will record their findings with drawings and have the opportunity to make a piece of sculpture to take back to school.

All the above workshops are led by a member of the Education and Outreach team at the Art Gallery & Museum and are available throughout the year. Each workshop lasts for approx. 2 hours at a cost of £60 (plus VAT) for up to 30 children.

Visits out to your school to deliver some of the workshops may also be possible on request.

For further details about workshops and bookings please contact the Education & Outreach Officers, Virginia Adsett, Faye Little or Sandra Ashenford, by e-mailing [educationoutreach@cheltenham.gov.uk](mailto:educationoutreach@cheltenham.gov.uk) or phoning 01242 775702.