

EVENTS

Thur 12 Oct 10.30 - 12.30 Creative Writing Workshop

Experienced tutor, Hazell Hills, leads this engaging creative writing workshop, drawing inspiration from Adam White's watercolours in *Postcards from the end of the world*. Tickets (14 only) £10 *

Sat 14 Oct Drop in at any time, 10.30 - 12.30, 1.30 - 3.30

The Big Draw - Every Picture tells a Story

The Art Gallery & Museum and the Literature Festival are joining forces this year to celebrate The Big Draw - a national event to get everyone drawing. With drawing activities throughout the galleries, you are invited to help create a gigantic picture book made up of your words and drawings inspired by art and literature. FREE event for all ages.



Sat 21 - 28 Oct Every Picture tells a Story

A chance to see the gigantic Big Draw picture book on display. FREE event.

Wed 18 & Sat 28 Oct Drop in at any time, 11.00 - 1.00, 2.00 - 4.00

Meet the artist

A chance to meet the artist Adam White, who will be working in the gallery on both days, and to find out more about his work in *Postcards from the end of the world*.

Wed 1 Nov 1.00 - 1.50 Artist in discussion

Adam White discusses his work shown in *Postcards from the end of the world*. Tickets £3.50 *

Sat 11 Nov 10.30 - 11.15 Words of Remembrance

Listen to a selection of moving and thought-provoking war poetry read by Genevieve and Jason from Theatre without Walls. The readings will include marking the two minutes silence at 11am. A free drop-in event for visitors of all ages to commemorate Remembrance Day together.

Sat 9 Dec Drop in at any time, 10.30 - 12.30, 1.30 - 4.00

Homefront Heroes with a 1940s Wartime Christmas

Celebrate Christmas 1940s style! A special day to bring back memories for older visitors, and for younger visitors to find out about celebrating Christmas, despite air raids, rationing and shortages. Discover what presents you might have found in your Christmas stocking, have a go at rag rug making and other activities, and meet the Home Front Heroes. FREE event for all ages.

2 Dec - 6 Jan Hunt the Robins

Find the Christmas robins hidden around the galleries. FREE children's trail.

*Tickets available from Cheltenham Art Gallery & Museum
Telephone 01242 237431 for credit card bookings.



SATURDAY MORNING TOURS/TALKS

In the Arts & Crafts Movement gallery 11.30, lasting about 30 minutes. Free

- 21 Oct** Dave Walton Eric Sharpe, cabinet maker, wood carver and letterer
28 Oct Beryl Elliott Designer or maker
4 Nov Michael Storm Influential immigrants
11 Nov David Addison Printmakers of the Arts and Crafts Movement
18 Nov Jan Turner Harry Davoll, a woodworker of excellence
25 Nov Celia Jones 100 years of silverwork: from Ashbee to Hart Silversmiths

Toys from a 1940s Christmas



Christmas & New Year Closure

The Art Gallery & Museum will be closed Monday 25
& Tuesday 26 December, and Monday 1 January.

A large print version of this text is available
from the Information Officer:

Tel: 01242 237431.

OPENING HOURS

Mon - Sat 10.00am - 5.20pm

First Thursday of each month open from 11.00am

Please note closed Thursday 7 September

for staff training purposes

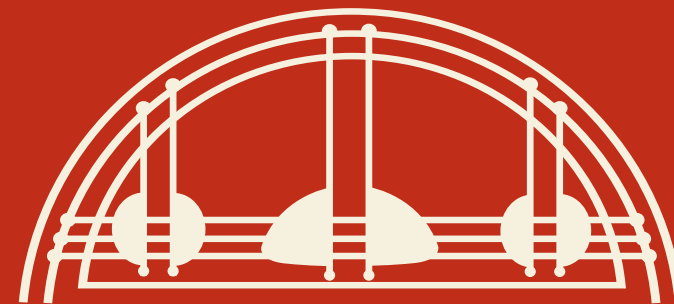
Admission Free, donations welcome

Closed Bank Holidays

Designated as an Outstanding
Collection



Cheltenham Art Gallery & Museum
Clarence Street, Cheltenham GL50 3JT
t 01242 237431 f 01242 262334
w www.cheltenham.artgallery.museum
w www.artsandcraftsmuseum.org.uk
e ArtGallery@cheltenham.gov.uk



CHEL TENHAM

ART GALLERY & MUSEUM

Exhibitions and Events
Sep - Dec 2006

Designed by ICON.net Limited 01452 305303. Information correct at time of going to press, August 2006.

Postcard from the end of the world (left panel)



Tom Bendhem

Collector

UNTIL 9 SEP

Some of the greatest 20th-century artists are represented in this show.

Horsing About

New creations and old friends from Forkbeard Fantasy

UNTIL 16 SEP

Be sure and catch the last few days of this innovative show of enormous puppets, wild mechanical sets and animation, all based on the theme of a day at the races - lots of fun for all the family.

The Longest Climb on Earth

16 SEP - 28 OCT

Stunning photographs form part of this exhibition which celebrates the achievements of the EverestMax expedition. At the end of last year, a team of explorers set off to travel from the lowest (the Dead Sea) to the highest point on earth (Everest). A local teacher from Cheltenham College, and ex-pupils of Pates Grammar School, Cheltenham, and Marling School, Stroud, were amongst the team.

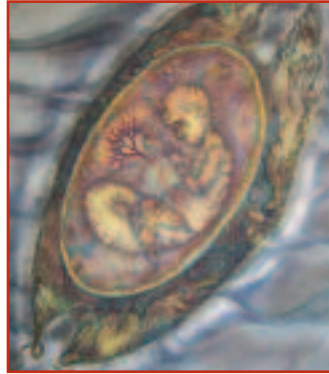


Postcards from the end of the world

Watercolours by Adam White

23 SEP - 4 NOV

Local artist Adam White experiments with watercolour on a vast scale. His innovative approach is intriguing, his subject matter thought-provoking. Generally figurative, his paintings explore the effects of science on modern life from a personal perspective. The result is almost a modern twist on Leonardo da Vinci; a fusion of other worldliness and science.



Mermaid's Purse (Embryology series), Adam White

Personal visions

Recent work by Cheltenham Group of Artists

11 NOV - 9 DEC

Paintings, photographs and sculpture from this professional group of artists can be seen in this exhibition.



Magda by Jacqueline Williams

Art and Fashion:

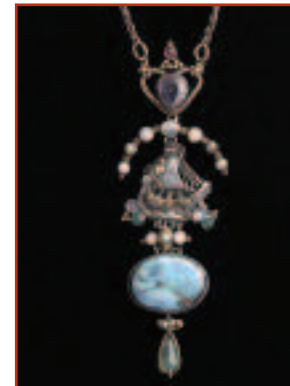
a private collection of jewellery from the Arts and Crafts period

4 NOV - 13 JAN 2007

In 1982 a young couple spotted a pendant in an antique shop in Worcester. This started a collecting bug which has continued ever since.

Dating from about 1870-1925, the cream of their jewellery collection will be on public show for the first time.

There are pieces by some of the most important designers of the period, including C R Ashbee, Arthur and Georgie Gaskin, Archibald Knox and Henry Wilson.



Pendant designed by John Bonnar and Henry Wilson and set with a turquoise, opals, and semi-precious stones, about 1910

Khel Toys from India

16 DEC - 27 JAN 2007

This is a rare chance to interact with the fascinating world of Indian toys. The exhibition combines a mixture of contemporary colourful toys with an outstanding selection of 19th- and 20th-century examples from the Museum of Childhood's own collection.

There are toys made from recycled materials, natural materials, traditional toys and those made for entertainment. The exhibition is organised by the V & A Museum of Childhood, London and Shisha (the International Agency for contemporary South Asian crafts and visual arts).

Museum of Childhood

